



Mahurangi Land Restoration Programme

Funding Guidelines



NGĀTI MANUHIRI
SETTLEMENT TRUST



MANUHIRI KAITIAKI
CHARITABLE TRUST



Auckland
Council
Te Kaunihera o Tāmaki Makaurau



www.ngatimanuhiri.iwi.nz/melr



mahurangilandrestoration@aucklandcouncil.govt.nz

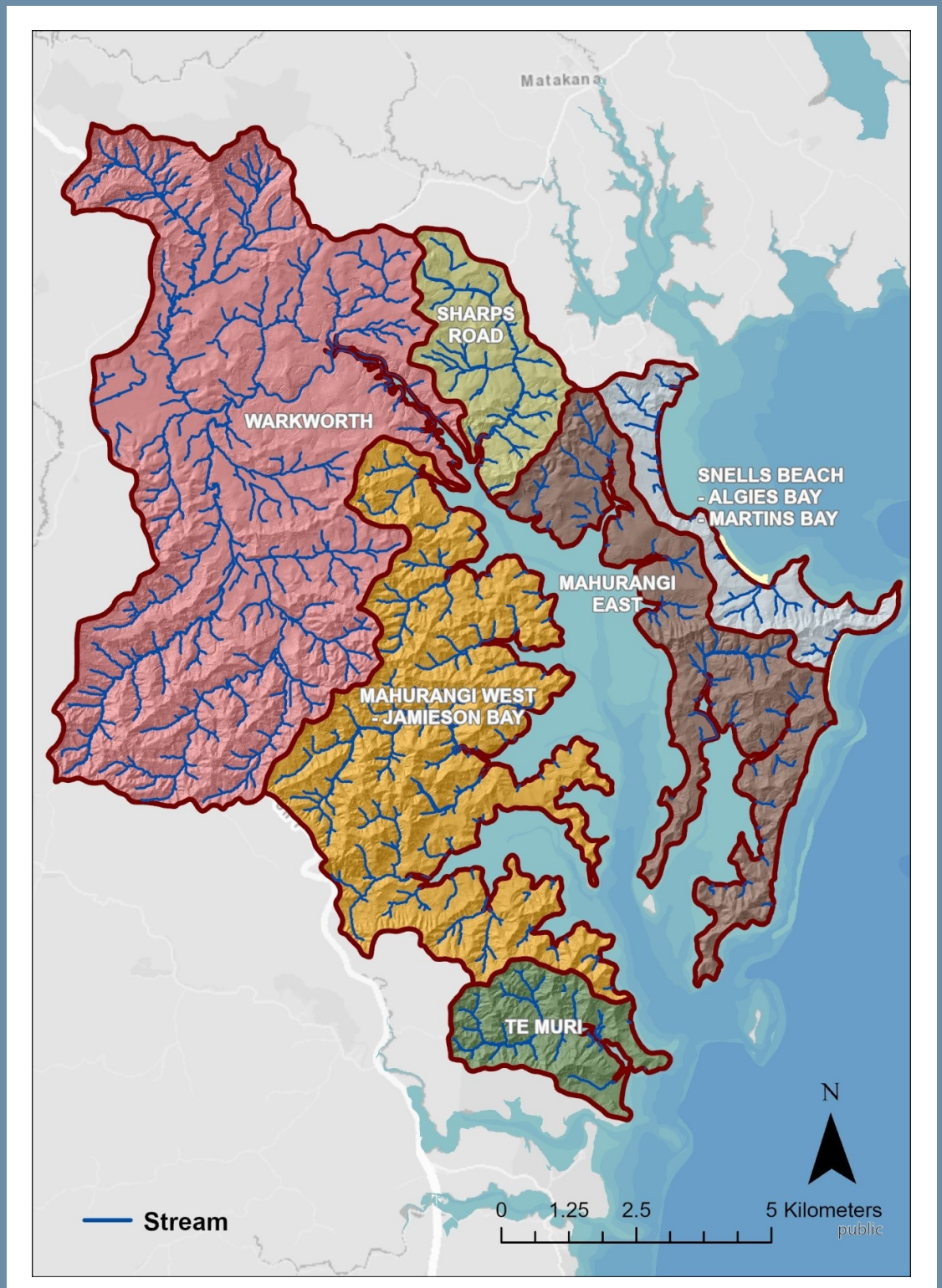
Introduction

Sediment is the third-highest threat to marine habitats in New Zealand. The Mahurangi Land Restoration Programme (MLRP) aims to increase the health of the Mahurangi Harbour and its waterways by reducing human induced sediment from private and public land activities.

Auckland Council and Ngāti Manuhiri Settlement Trust have partnered to design and deliver the MLRP, which is a \$5 million, five-year programme funded by the Ministry for the Environment's (MfE) 'Jobs for Nature' fund.

The programme supports the vision, values and mahi from previous foundational projects including the community-led Mahurangi Action Plan. With a focus on rural land use, forestry and unsealed roads, the MLRP grants funding to landowners and community initiatives that help reduce sediment in the Mahurangi catchment.

Mahurangi Catchment



Who can apply for funding?

Funding is available to landowners or groups in the Mahurangi catchment wanting up to 60% financial contribution towards projects that help protect:

- waterways including permanent and intermittent streams, springs and headwaters
- coastal margins
- wetlands
- critical source areas e.g. steep gullies
- native bush that contains a waterway

An applicant's contribution can include in-kind / voluntary labour, cash, or funding acquired from another source.

If you have received funding from MLRP previously, you can apply again if the work that was funded has been completed.



What can I apply for?

Funding is available for:

- buying native plants
- planting labour
- fencing materials
- fencing labour
- site preparation & maintenance
- alternative water supply
- stream bank erosion mitigation
- fish passage improvement

Funding is not available for:

- activities to meet consent conditions (current and for the next 10 years)
- extensive weed control

We're here to help!

If you would like to discuss applying for funding, please contact MLRP land advisor:

Holly Fleming

Mob: 021 548 818

Email: hollyfleming@terrapura.co.nz

She will arrange to meet you on-site, help you scope the project, and compile the information you'll need for your funding application.

MLRP minimum standards

Riparian Margin

- The new fence must be setback a minimum of 5 metres from the edge of the waterway. However, wider setbacks are welcomed.
- For wetlands and seeps the fence should go around the natural margins of the area.

Fencing

- The minimum fence type is 5-wire, wooden post fence, with first and third wire electric . However with approval, fencing can be tailored to meet conditions (i.e., flood zone).

Riparian Margin and Wetland Restoration Planting

- All plants must be native, eco-sourced* and appropriate to the planting area.
- A minimum of five plant species must be included in the planting scheme for all planting areas.
- A MLRP land advisor will give advice on selecting eco-sourced plants for each site.

** Eco-Sourced Plants are plants where seed has been collected from local, natural plant populations and grown within the 'ecological district'. The local origin of these plants means they will be well adapted to the local climate and soils and have a greater chance of survival. They also protect and encourage better area specific biodiversity. Local native plant nurseries can usually supply eco-sourced native plants on request, but our team can also help with sourcing the right plants.*

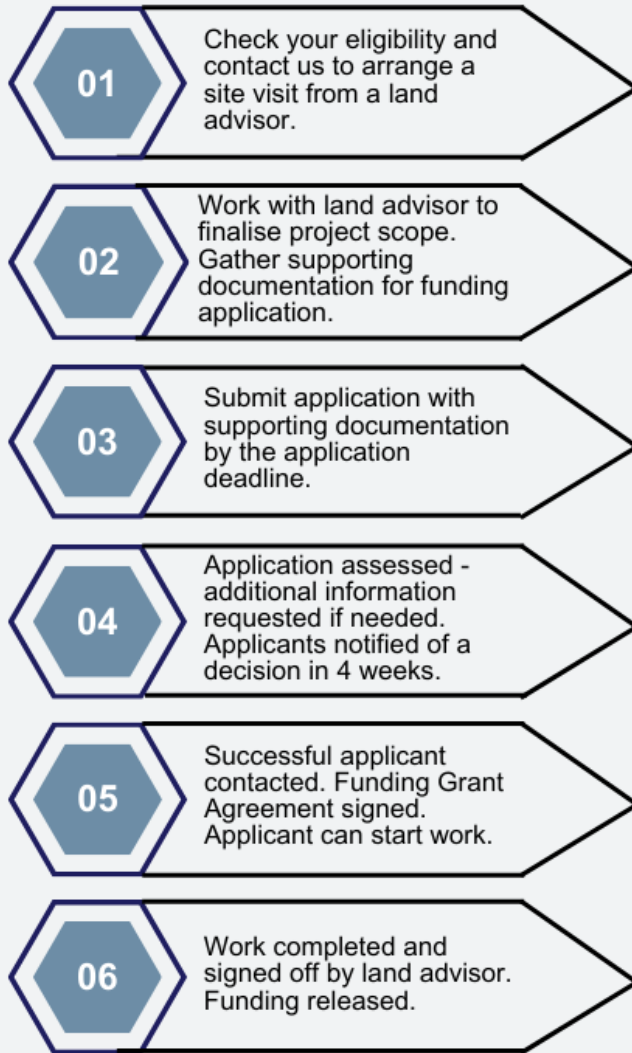
For information on stream restoration planting see: [Auckland Council Streamside Planting Guide](#)

For information on wetland restoration planting see: [Wetland Restoration Guide](#)

Local landowners involved in the MLRP
Roger and Robyn Dunn



Funding Steps



Supporting Documentation

- Relevant quotes e.g. for fencing, planting, alternative water supply
- Bank account details

Cultural significance of the Mahurangi River



NGĀTI MANUHIRI
SETTLEMENT TRUST

Ko wai au I am water

Ko wai matou We are water

Ko au te awa I am the river

Ko te awa ko au The river is me

The Ngāti Manuhiri Settlement Trust advocate for cultural enhancement, environmental protection and marine protection among many other things. The Mahurangi River and surrounding waterways are taonga (treasures) and of huge importance to Ngāti Manuhiri.

According to Ngāti Manuhiri it's name comes from Mahurangi an ancestress of Tainui waka that arrived in the thirteenth century and was a renowned tohunga (high priestess). Mahurangi gave karakia to the Atua for guidance and protection of her people as they embarked on their journey to Aotearoa from their ancient homelands of Hawaiki.

Whilst the Mahurangi of today is predominantly considered the coastline between Scotts Landing and Pūhoi (Mahurangi West), it is the original land title from between Te Arai and Takapuna.

Frequently asked questions

What is the maximum and / or minimum amount I can apply for?

There is NO maximum or minimum amount. All applications are assessed on merit and based on how well they align to the MLRP objectives.

What is the cut-off date for funding applications?

Applications for the next funding round in the 2023 / 2024 financial year must be received before 1 March 2024.

Who assesses and approves the applications?

The MLRP Programme Manager undertakes an initial assessment, which includes reviewing all the information provided by you and the MLRP land advisor. Further information may be requested, and could include a cultural heritage review, which would be undertaken by Auckland Council's archaeology team.

How is GST dealt with?

If you **are** GST registered, project costs should **exclude** GST.

If you're **not** GST registered, project costs should **include** GST. All expenses for your project must be included in your application budget.

When do I get the money?

Grants are released to reimburse the cost of goods and services purchased for the project, when the land advisor has conducted an audit site visit, and copies of all relevant receipts and invoices have been provided.

If my funding application is successful, when can I start work on the project?

Work on the project can start when you (the landowner) have signed a Funding Agreement with Auckland Council. The Funding Agreement includes terms and conditions specific to your project. Funding is not retrospective - no work can be undertaken before a signed Funding Agreement has been returned to you. If work starts before this, you run the risk of not being reimbursed for any costs. Successful applicants are notified via email.

What monitoring of funded projects is undertaken?

The MLRP land advisor will visit your property to sign off completed works so funds can be reimbursed to you. Planting projects are randomly selected for annual monitoring checks. If your project is not randomly selected for monitoring, it will be checked at the end of the MLRP programme in 2026 so we can see how great the project has turned out.

What are my obligations once the project has been completed?

Under the terms of this funding, you are required to maintain fences, plants, and pest plants. Stock must always be excluded from the protected area.

For further information contact MLRP Land Advisor, Holly Fleming.

Mob: 021 548 818

Email: hollyfleming@terrapura.co.nz